



THE ESTATE COMPANY



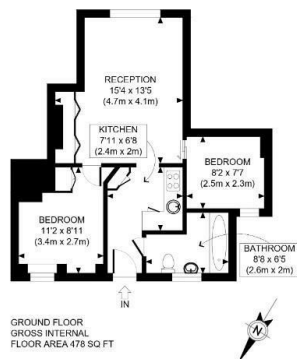
Mortimer Crescent, London, NW6 5NR

£2,600 Per Month

- Excellent Decorative Condition
- Furnished
- Resident Porter
- Two Bedroom
- 478 sq Ft
- Communal Gardens
- Heating Included in Rent

22 Barkat House, 116/118 Finchley Road, London, NW3 5HT
020 7372 5000

enquiries@theestatecompany.com



GROUND FLOOR
GROSS INTERNAL
FLOOR AREA 478 SQ FT

APPROX. GROSS INTERNAL FLOOR AREA: 478 SQ FT/ 44 SQM

This plan is for illustrative purposes only and should be used as such by any prospective client. Whilst every attempt has been made to ensure the accuracy of the Floor Plan contained here, measurements of the doors, windows, rooms and any other items are approximate and no responsibility is taken for any errors, omissions, or misstatement. The services, systems and appliances shown have not been tested and no guarantee as to the operability or efficiency can be given.

PROPERTY PHOTO PLANS

Directions

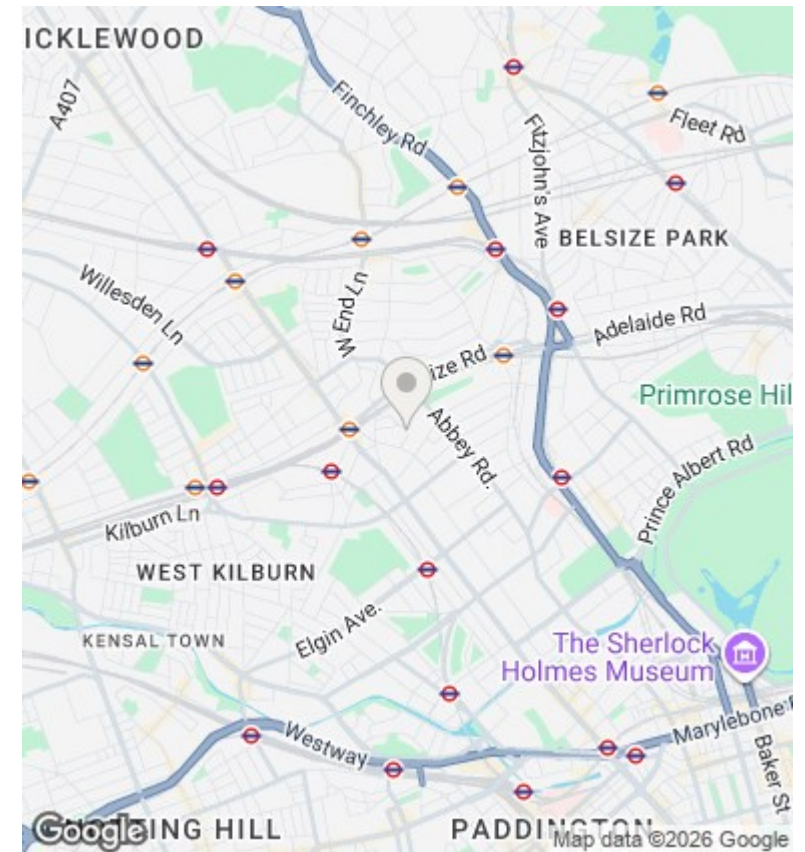
Viewings

Viewings by arrangement only. Call 020 7372 5000 to make an appointment.

Council Tax Band

EPC Rating:

C



Energy Efficiency Rating		
	Current	Potential
Very energy efficient - lower running costs		
(92 plus) A		
(81-91) B		
(69-80) C	71	
(55-68) D		
(39-54) E		
(21-38) F		
(1-20) G		
Not energy efficient - higher running costs		
England & Wales	EU Directive 2002/91/EC	